

CLIMATE IMPACT CHECKUP TOOL



Climate Impact Checkup (CIC) is a tool developed by Health Care Without Harm to help health care facilities and systems measure and reduce their carbon footprint. The tool is aligned with the Greenhouse Gas (GHG) Protocol and contains emission factors per country when available and applicable, to allow for accurate health facilities' footprint estimation in most countries. For instance, in electricity, CIC uses national and subnational values of more than 200 nations and territories. It is available both as a downloadable spreadsheet and

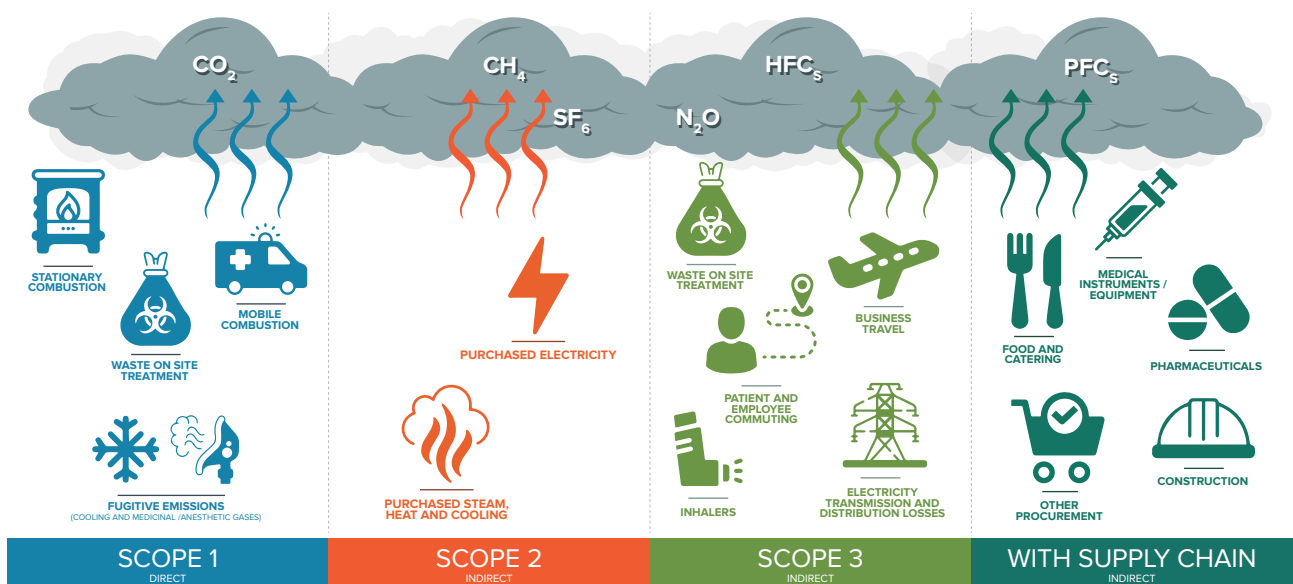
online, enabling users to benchmark their carbon footprint against similar facilities in their country, region, and globally while participating in discussion forums and a global community of practice.

Health care facilities in more than 25 countries are currently using CIC, and it is being adopted nationally in some countries, such as Colombia, Chile, and Indonesia. Health Care Without Harm receives feedback from users to continually improve and update the tool.

Sources of GHG emissions included in Climate Impact Checkup

The sources in CIC cover Scope 1, Scope 2, and Scope 3 (including extra supply chain) emissions,

selected for their relevance to general emissions sources and/or because they are health care sector-specific. The sources covered in CIC are periodically updated based on user feedback to include additional sources of emissions, as well as more local/specific data. Users' feedback provides valuable information about the priorities and needs at the facility and system level, which contributes to prioritizing the new sources to be added to the tool.



Who has access to Climate Impact Checkup?

Health ministries that have committed to the COP26 Health Programme and are part of the Alliance for Transformative Action in Climate and Health (ATACH) have access to a downloadable spreadsheet version of the tool and an accompanying guide.

Health ministries can also join Health Care Without Harm's [Global Green and Healthy Hospitals Network \(GGHH\)](#) to access the online version of CIC.

Network members can enjoy various benefits, including:



Live calculations, graphics, and benchmarking by year;



PDF report of annual emissions with graphics and tables;



Latest offline (Excel) version of the tool for annual calculations;



Community of practice;



Workshops to learn how to use the tool and increase the quality of inventories;



Guidelines to use the tool, set targets, and create action plans.

Members of the GGHH network have full, free access to both online and downloadable spreadsheet versions of the CIC. Ministries of Health considering using CIC can contact checkup@hcwh.org.

Users of the online version of the tool can generate graphics to analyze their data per year and compare metrics (e.g. CO₂eq/patient/year) with other institutions in the same country or globally with institutions of the same level of complexity. They can also view their reports on a map that reflects the geographies from where other hospitals are reporting. All data is treated with absolute confidentiality.



Climate Impact Checkup online course

In 2023, an [online course](#) in English and Spanish was released. The course consists of 13 classes and more than six hours of video on carbon footprint calculation, including extra supply chain categories and action plan development.

Health care and sustainability professionals who enroll in the course receive both the downloadable spreadsheet and a limited online tool version for six months after registration. health care and sustainability



GGHH members

Ministries of Health from Bhutan, Colombia, Ethiopia, Maldives, Peru, Thailand, Vietnam, and several sub-national health authorities are part of the Global Green and Healthy Hospitals. The network has over 1,900 members in 86 countries who represent the interests of more than 70,000 hospitals and health centers.

About Health Care Without Harm

Health Care Without Harm works to transform health care worldwide so that it reduces its environmental footprint, becomes a community anchor for sustainability and a leader in the global movement for environmental health and justice.

Requests and questions can be directed to checkup@hcwh.org.

To learn more about Health Care Without Harm's global Climate program, please visit <https://healthclimateaction.org/>